

PDHW

Industrial-Duty, Kubota Diesel-Powered, Self-Contained, Hot Water Pressure Washer

HOT WATER

DIESEL-HEATED

INDUSTRIAL



- 4.7 GPM, 3500 PSI
- Kubota Diesel Engine
- Belt-Drive Pump with 7-Year Warranty
- SureFire Burner*
- 2,900 Watt Generator*



- Rugged tri-plunger, belt-drive, **High-Pressure LT Pump** with forged brass head and 7-year warranty.
- **Kubota Factory-Certified** application of industrial-duty 599cc **Kubota Diesel Engine** with keyed electric start.
- High-efficiency **12V SureFire Burner*** is mounted on the end for ease of servicing and fuel adjustment.
- **120V Burner** and GFCI receptacle are powered by reliable **2,900 Watt Generator***.
- Easy to service with **Locking Swing-Out Access Door**.
- Conveniently placed **Control Panel** features **Keyed Ignition Switch**, **Burner On/Off Switch**, **Indicator Lights** for glow plug, low water and low oil, **Adjustable Thermostat** to control temperature, and **Hour Meter** for total operating time. Models with generator have a **120V GFCI Receptacle**.
- Helpful **Trilingual Labels** with operating instructions and warnings in English, Spanish and French for owner and operator protection.
- Trailer-ready with pre-drilled **Trailer Mounting Brackets**.
- Cast-iron bushing **Pulleys** and two notched "V" cogged belts provide cooler operation and longer life.
- Many **Safety Features**, including rupture disk, thermal pump protector and high-temperature shut down to guard against any buildup of excessive pressures or heat.
- Durable polyurethane **Battery Box** protects battery and is easy to access.
- Super-duty **Horizontal Heating Coil**, made of cold-rolled, Schedule 80 steel pipe has a 5-year warranty and is surrounded by an aluminized steel inner wrap and stainless steel top wrap.
- Four **Quick-Couple Nozzles** are made of hardened stainless steel and are mounted for ready access.
- Extremely versatile with many Options that include **Wheel Kit**, **Float Tank** with inlet injection, **Hose Reel Platform**, **Downstream Injector**, **Lift/Stack Platform**, stainless steel **Drip Pan**, emergency engine **Air Shutoff**, and engine **Spark Arrestor**.
- Power platform is mounted on **Vibration Isolators** to extend the life of key components.
- Rugged, 2-inch, polyester powder-coated channel **Steel** or **Stainless Steel Frame** for all-weather resistance includes **Forklift Guides** for easy mobility.
- Extra-large 22-gallon diesel **Fuel Tank** has elevated fuel lines to prevent debris in fuel from causing damage, and tilts out for easy servicing.
- Heavy-duty **Fuel-Water Separator** has replaceable element for removing water that can damage the burner fuel pump.
- 50 ft. of 3/8", double-wire braid **Tuff-Skin Hose** featuring a 24-inch **Hose Guard** for burst protection.

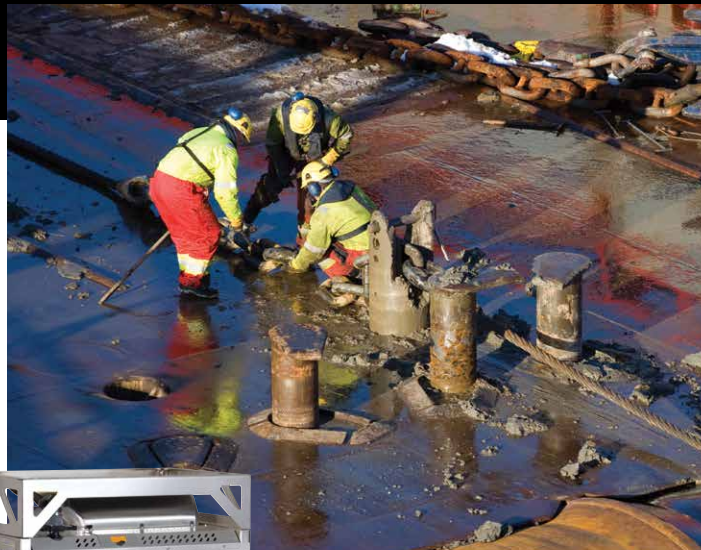
* SureFire burner on 12V burner models only.
2,900 watt generator on 120V burner models only.

LANDA®

#LANDATOUGH
Pressure Washers Built to Last - landa.com

WHY CHOOSE THE PDHW?

This series fills the gap for those who are looking for the versatility of a compact pressure washer with the ruggedness and cleaning power of a full-size skid unit. It's packed with features and options that make it highly adaptable for use in a variety of different applications. You'll find a 2,900-watt generator that provides plenty of power for the burner, as well as a 120V outlet for low-wattage needs; forklift guides for easy transporting, mounting brackets to attach to a trailer, and an oversized, tilt-out fuel tank that'll assure you have hours of uninterrupted cleaning. A sturdy steel frame is available in a polyester powder coat finish for added weather protection, or all-stainless steel for the ultimate insurance in high corrosion environments, making this unit the ideal choice for an offshore oil drilling operation. Highly versatile and built with the same attention to quality you've come to expect from Landa, the PDHW is a great all-around "mid-size" choice for all your cleaning needs!



PDHW5-35624E/SS shown with optional stainless steel Lift/Stack Platform Kit and Emergency Air Shutoff Kit

Model #	Part #	GPM	PSI	Pump RPM	Pump	Engine	CARB Compliant*	CCs	Burner Voltage	Ship Wt (lbs)
PDHW5-35624E	1.110-060.0	4.7	3500	1125	LT6036L.2	Kubota Z602	Yes	599	12V DC	948
PDHW5-35624E/SS	1.110-061.0	4.7	3500	1125	LT6036L.2	Kubota Z602	Yes	599	12V DC	948
PDHW5-35624E/G	1.110-062.0	4.7	3500	1125	LT6036L.2	Kubota Z602	Yes	599	120V AC	998
PDHW5-35624E/G/SS	1.110-063.0	4.7	3500	1125	LT6036L.2	Kubota Z602	Yes	599	120V AC	998

Dimensions: 48"L x 32"W x 44"H E = Electric start engine (battery not included) G = 2,900 watt generator SS = Stainless steel frame *CARB compliance required for in California.

Field Installed Options & Accessories

8.919-983.0	Hose Reel Platform Kit	8.919-990.0	Lift/Stack Platform Kit
8.904-525.0	Wheel Kit (4 tires)	8.920-298.0	Lift/Stack Platform Kit, Stainless Steel
8.919-981.0	Float Tank with Inlet Injection Kit	8.919-985.0	Stainless Steel Drip Pan Kit
9.802-225.0	Downstream Detergent Injector Kit	8.919-988.0	Emergency Air Shutoff Kit
8.919-984.0	Lifting Sling Kit	8.919-989.0	Engine Spark Arrestor Kit

SPEED IT UP WITH ACCESSORIES

We offer a number of pressure washer accessories to reduce your cleaning time. Depending on your cleaning application, choose from items such as flat surface cleaners like the Water Jet, rotary nozzles, extension wands and more.

If you're cleaning long hours at a time, the EASY!Force trigger gun is an ideal and innovative solution to alleviate user fatigue. It's designed to use its own recoil force to hold the trigger down, which means you won't have sore hands after hours of use.

We also offer accessories designed to lengthen the life of your equipment, such as hose reels, which not only protect the high-pressure hose from damage, but help with storage when not in use.

Give us a call to learn which accessories are suitable to use with your pressure washer - and your application.

DETERGENT FOR EVERY JOB

Landa innovative detergent lineup makes your cleaning job easier and faster. Phosphate-free to meet the most stringent environmental demands without sacrificing cleaning effectiveness. We'll match you with a product designed for your specific application.



Your Authorized Landa Dealer:



633 N Helena St
Spokane, WA 99202
(509) 535-1555
northstardirect.com
info@northstardirect.com

LANDA®