



KÄRCHER



**ALWAYS
WELL-
EQUIPPED.**

For extended heavy-duty use.

PROFESSIONAL | HD MID CLASS CAGE SERIES

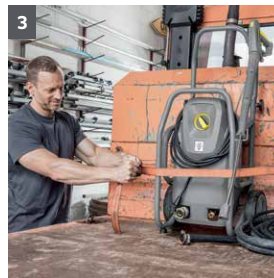
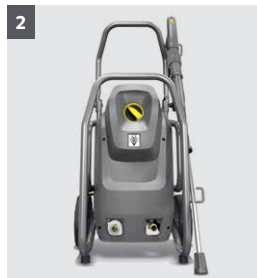
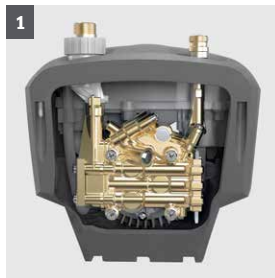


HD MID CLASS CAGE



For commercial use under tough conditions.

Whether in vertical or horizontal use: the unheated Cage Mid Class can cope with any situation in tough, daily commercial use. These mobile, very robust machines are equipped with a 3-piston axial pump with brass cylinder head, which makes possible an improvement of up to 15 percent in cleaning performance and energy efficiency. An automatic pressure relief device is integrated to protect all the high-pressure components, and an additional water filter is installed for the pump itself. This series is designed to make servicing very easy, and is equipped with a powder-coated tubular steel frame which ensures that the high-pressure cleaner can be used in even the toughest applications without damage.



1 High-quality equipment

- Automatic pressure relief for protecting the components extends their life.
- Powerful, air-cooled electric motor.
- High-quality brass cylinder head.

2 Serviceability

- Easy access to pump and electric box.
- Water inlet filter for pump protection and longer service intervals.

3 Durable and robust

- Sturdy tubular steel frame protects all components.
- The tubular steel frame is also suitable for simple fastening and lashing of the machine in the service vehicle.

4 Increased energy efficiency

- Newly developed 3-piston axial pump with considerably reduced flow and pressure losses.
- 15% increase in cleaning performance and energy efficiency.

Technical data and equipment.

TECHNICAL DATA

Model	Part No.	GPM	PSI	Drive	Electrical	Amps	Pump	Ship Weight (lbs)	Ship Dimensions (L x W x H) Inches
HD 2.3/15 M Cage Ed	1.150-936.0	2.3	1500	Direct	110V / 1ph	19	Kärcher Axial	86	18 X 16 X 39
HD 3.0/20 M Cage Ea	1.150-939.0	3	2000	Direct	230V / 1ph	18	Kärcher Axial	86	18 X 16 X 39

ACCESSORIES

Order No.	Description
■ 4.118-005.0	EASY!Force trigger gun
■ 4.112-006.0	Jet pipe TR 33"
■ 2.113-043.0	Power nozzle TR 25036 (standard on 1.150-936.0)
■ 2.113-007.0	Power nozzle TR 25042 (standard on 1.150-939.0)
■ 6.110-034.0	High-pressure hose, 2 x EASY!Lock, DN 6, 3600 PSI, 33'
□ 6.110-035.0	High-pressure hose 2 x EASY!Lock DN 6, ANTI!Twist, 3600 PSI, 33'
□ 6.110-014.0	High-pressure hose, 2 x EASY!Lock, DN 8, ANTI!Twist, 4500 PSI, 100'
□ 6.110-030.0	High-pressure hose 2 x EASY!Lock DN 8, ANTI!Twist, 4500 PSI, 50'
□ 6.110-027.0	Longlife 400 high-pressure hose, 2 x EASY!Lock, DN 8, ANTI!Twist, 5800 PSI, 66'
□ 6.110-023.0	Longlife 400 high-pressure hose, 2 x EASY!Lock, DN 8, ANTI!Twist, 5800 PSI, 100'
□ 6.110-029.0	Longlife 400 high-pressure hose, 2 x EASY!Lock, DN 8, ANTI!Twist, 5800 PSI, 50'
□ 2.115-001.0	Male coupling
□ 2.115-000.0	Quick coupling
□ 4.114-041.0	Dirt blaster, large, size: 040
□ 2.111-013.0	Hard Surface Cleaner FR 30 Me
□ 2.111-010.0	FRV 30 Surface Cleaner
□ 2.640-401.0	Nozzle kit for FR 30 Me
□ 2.642-431.0	Nozzle kit for FRV 30

■ Included □ Optional ■ Compatible with EASY!Lock

Please contact us for more information:

Kärcher U.S.A.

6398 N. Kärcher Way
Aurora, CO 80019
U.S.A.

Tel. 888-805-9852
Fax 800-248-8409



www.karcher.com/us/professional



KarcherUSA



@kaercher_us_professional



karchercommercial



karcher-us



KarcherUSA



633 N Helena St. Spokane, WA 99202
(509) 535-1555 | info@northstardirect.com

1210 N Oregon Ave. Pasco, WA 99301
(509) 547-2323 | info@northstarhotsy.com